

✉ stephen@overland360.com

☎ +27828880827



Namibia, Botswana & Victoria Falls Safari (East Bound)

Departs from: Windhoek (Namibia)
Ends in: Kasane (Botswana) or Victoria Falls (Zimbabwe)
Tour length 26 Days
Destinations: Zimbabwe, Namibia, Botswana
Price: USD 10490 per person
Next Departure: 24 February, 25 May, 20 October 2020



Stephen Becker

+27828880827

stephen@overland360.com

Tour summary

This Southern African safari starts in [Namibia \(Windhoek\)](#) and ends in [Botswana \(Kasane\)](#) or Victoria Falls. In Namibia you'll spend three glorious nights in [Etosha National Park](#), before heading out into some of Namibia's most spectacular desert landscapes – [Kaokoland](#), [Damaraland](#) – in search of the elusive desert-adapted elephants, rhinos and lions. Putting your new found 4×4 skills to the test, we'll take on the iconic [Van Zyl's Pass](#) – a true 4×4 experience – before heading back south for a night beneath the spectacular boulder formations of Spitzkoppe.

Moving into Botswana, we'll interact with San bushmen in the [Central Kalahari Game Reserve](#), and spend time exploring the [Savuti Region](#), [Chobe National Park](#), the [Okavango Delta](#) and [Moremi Game Reserve](#). We'll round off an unforgettable safari with three days at the iconic [Victoria Falls](#), with plenty of time for additional activities, such as helicopter flights, white water rafting and canoeing.

Our fully-equipped [Avis 4×4 Safari Vehicles](#) are best in their class and you'll stay in a mix of superb wild safari camps and 3- to 5-star safari lodges.

Highlights

- Carefully selected luxury lodges and wild safari camps
- 3 day visit to Victoria Falls
- 1 night in Chobe National Park and Chobe River photographic cruise
- 2 nights in Moremi Game Reserve, Okavango Delta and mokoro water safari
- San bushmen in the Central Kalahari
- 2 nights in Etosha National Park
- Van Zyl's Pass, Desolation Valley, Brandberg and Spitzkoppe
- Rare desert elephant and rhino

✉ stephen@overland360.com

☎ +27828880827



Days 1-2 – Arrive in Windhoek



Collect safari vehicle and shop for personal supplies. Overnight at a luxury hotel and a welcome dinner.

Days 3-6 – Etosha National Park



We set off to the Eastern side of the world famous Etosha National Park and overnight at a comfortable safari lodge. Day 3 is spent on a leisurely game drive, heading west into the park. We'll explore vast pans full with seasonal bird life and overnight in our luxury vehicles in a camp under the stars. We can hope to see lion, elephant, black rhino and giraffe as they gather at waterholes along the route and will follow the network of 4×4 trails that fringe this huge white-green salt pan, a breeding ground for thousands of migrating flamingos.

✉ stephen@overland360.com

☎ +27828880827



Days 7-8 – Kaokoland and Epupa Falls



Continuing west through Etosha National Park we'll exit through the Galton Gate. From here we enter into Kaokoland, one of the wildest and least populated areas in Namibia – population density one person every 2km² (1/4 of the national average). The most represented ethnic group is the Himba people, who account for about 5000 of the overall 16000 inhabitants of Kaokoland. Two days of relaxing at a palm filled oasis camp on the Kunene River, overlooking Angola and just a few hundred metres from the Epupa Falls.

Day 9 – Van Zyl's Pass



Well rested, we head towards Van Zyl's Pass base camp. Van Zyl's Pass is arguably the most iconic 4×4 route in Southern Africa and we'll overnight near one of the river beds high up in the craggy mountains.

✉ stephen@overland360.com

☎ +27828880827



Day 10 – Kaokoland and Marienfluss



The highlight of your desert mountain experience will be beholding the spectacular Marienfluss Valley as it unfolds from the top of Van Zyl's Pass. It's 3000m descent into the valley and an exhilarating trail to a very friendly and intimate community-owned camp site.

Days 11-12 – Puros Canyon



Travel through Namibia's most dramatic landscapes en route to a magnificent luxury lodge perched on the banks of the Hoarusib River. Spend the following day exploring the canyon where you'll find a variety of desert adapted wild animals. Or spoil yourself in the excellent restaurant, recharge, read a book.

✉ stephen@overland360.com

☎ +27828880827



Day 13 – Damaraland and the Palmwag Conservancy



Working our way south along the Hoarusib and Hoanib riverbeds, we'll immerse ourselves in this vast, spectacular wilderness, hope to Namibia's rare and magnificent desert elephants. Reaching your camp early afternoon, you may want to join a local guide in search of the region's even more elusive desert rhino.

Day 14 – Desolation Valley



The following day you'll continue south, into the Huab River, to an exclusive campsite in the breathtaking Desolation Valley. Desert elephants are fairly common in this stunning region, as well as large herds of springbok and oryx.

✉ stephen@overland360.com

☎ +27828880827



Day 15 – Spitzkoppe



Day 15 takes you past the Brandberg, the highest point in Namibia, world famous for its many thousands of rock paintings. As the sun sets over this startling dome of rock, the mountain itself seems to catch on fire – giving it its name, Brandberg, or ‘burning mountain’. Camp under the stars at the Spitzkoppe (the “Matterhorn of Namibia”) which is nearly 700 million years old.

Day 16 – Windhoek



A night in Windhoek at luxury hotel for a chance to refresh, relax and shop for personal supplies.

✉ stephen@overland360.com

☎ +27828880827



Days 17-18 – Central Kalahari Game Reserve



A unique element of this safari is a two day visit to the Central Kalahari, with a chance to interact with the San bushmen who call this vast, wonderful region their home.

Days 19-20 – Mokoro Delta Safari



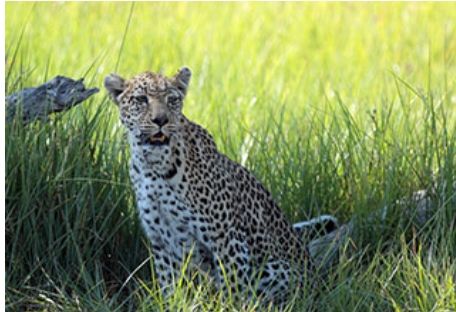
Heading north into the Okavango Delta, we'll explore this vast and unique water wonderland – arguably Botswana's best wildlife area. The next two days will be spent in search of the wide variety of animals and birds that this remarkable region is renowned for. You'll explore the reed channels and floodplains in a mokoro (traditional dugout canoe), while absorbing the beauty of this magnificent area. Overnight at a safari camp deep in the Delta.

✉ stephen@overland360.com

☎ +27828880827



Days 21-22 – Moremi Game Reserve



Moving northeast through Moremi Game Reserve, you'll follow the historic routes of the early Bechuanaland pioneers into the Moremi/Khwai Concession Area. This stunning region is known for its prolific and diverse wildlife and day 21 will be spent at one of the newest lodges in the area. The next day you'll have the opportunity to explore the area at your leisure, with a picnic lunch in the bush. Overnight under the stars at a magnificent wild safari camp.

Day 23 – Chobe River Photographic Safari



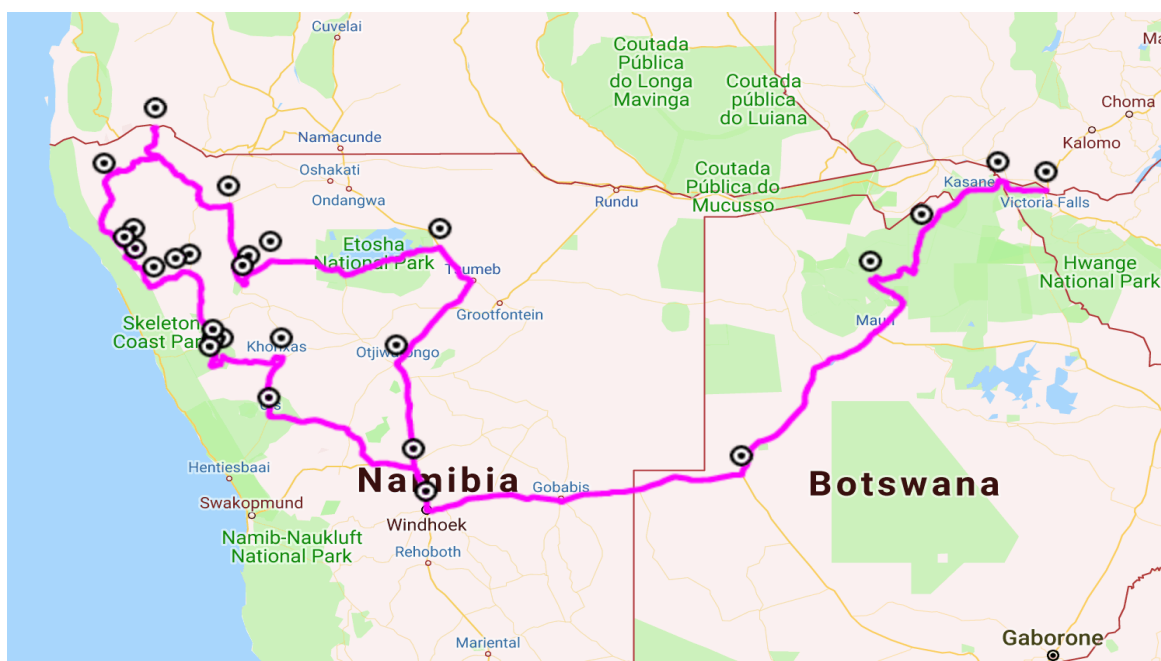
Continuing north, we'll explore the Chobe River on an unforgettable photographic safari. From photo-friendly boats and assisted by the world-renowned Pangolin photo team, you'll get to see wildlife from a whole new perspective. Being low to the water allows for some exceptional photo opportunities. Professional equipment can be supplied if required. Overnight at a unique, new lodge overlooking the Chobe River and its flood plains.

Days 24-26 – Victoria Falls



To round off an unforgettable journey, we'll transfer into Zimbabwe to visit the magnificent Victoria Falls. Lunch on the veranda of the iconic "Vic Falls Hotel" overlooking the gorge and the historic railway bridge, followed by a boat ride on the Zambezi. Enjoy three nights' luxury accommodation in Victoria Falls, with optional additional activities, including white water rafting down the Zambezi Gorge, canoeing on the upper Zambezi River, elephant encounters and helicopter flights over Victoria Falls. Return flights out of Victoria Falls or Kasane.

Route



✉ stephen@overland360.com

☎ +27828880827



Included

- All lodge, park and safari camp fees
- A personal and private fully-equipped, self-drive luxury Avis Safari 4×4 vehicle – which includes: full bedding, crockery and cutlery, fridge and freezer, hot and cold water (shower optional), table and chairs, solar power
- Breakfast and dinner daily
- Selected beverages at some lodges
- All activities and personal guide as per the itinerary
- Directions, maps and GPS routes
- Airport transfers on day of vehicle collection and drop off

Excluded

- Beverages in some camps and lodges
- Fuel
- International flights and visas
- Personal insurance including medical and evacuation, personal belongings, baggage, cancellation and curtailment
- Tips, curios, and any optional (non-scheduled) excursions and activities
- Local increases in park fees and taxes between time of booking and arrival

[Full terms & conditions](#)

<https://overland360.co.za/terms-and-conditions/>